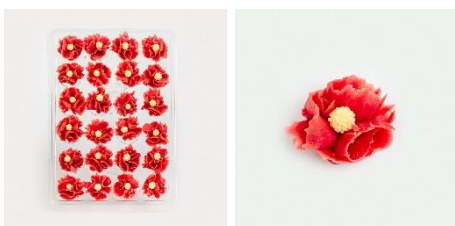


#### PRODUCT NAME



Chinese roses

#### GENERAL INFORMATION

| Color    | Item code | UPCA (selling unit) | EAN (outercase) | HS code  |
|----------|-----------|---------------------|-----------------|----------|
| White    | 0001      | 871604200789        | 8716042000787   | 17049099 |
| Yellow   | 0002      | 871604200796        | 8716042000794   | 17049099 |
| Pink     | 0003      | 871604200802        | 8716042000800   | 17049099 |
| Salmon   | 0004      | 871604200819        | 8716042000817   | 17049099 |
| Red      | 0005      | 871604200826        | 8716042000824   | 17049099 |
| Bordeaux | 0005b     | 871604200833        | 8716042000831   | 17049099 |
| Wedding  | 0009      | 871604200840        | 8716042000848   | 17049099 |

#### WEIGHT

160g.

#### INGREDIENTS DECLARATION

Sugar, **ALMONDS** (25%), glucose, sorbitol (E420), xanthan gum (E415), rice starch, acidifying: citric acid (E330), stabilizing: invertase, salt, colorant: see here below:

| Color    | Coloring agent        | Also contents   |
|----------|-----------------------|---|
| White    | E100                  |   |
| Yellow   | E161b, E100           |   |
| Pink     | E120, E100            |   |
| Salmon   | E120, E160a, E100     |   |
| Red      | E120, E160b(ii), E100 |   |
| Bordeaux | E120, E100            | Cacao   |
| Wedding  | E174                  | The silver pearl contains: WHEAT flour, mais starch, maltodextrin |

# PRODUCT SPECIFICATONS

Versie V02

Creation date: 23/05/2022

## ALLERGENS DATA

This product contains: **ALMONDS**. This product can contain trace of **NUTS, SOY, MILK**

## NUTRITIONAL VALUES PER 100g

|                    |          |         |
|--------------------|----------|---------|
| Energy             | 1776/425 | KJ/Kcal |
| Fat                | 11.10    | g       |
| Of which saturated | 1.00     | g       |
| Carbohydrates      | 76.30    | g       |
| Of which sugars    | 69.50    | g       |
| Fibers             | 2.40     | g       |
| Proteins           | 4.50     | g       |
| Salt               | 0.00     | g       |

## GMO STATMENT

Jan Gevers states that this product doesn't contain any GMO according to 1829/2003/EG en 1830/2003/EG Regulation

## PACKAGING

| cm                    | Dimensions      |
|-----------------------|-----------------|
| Plastic box (PET)     | 16.5 x 24 x 3,8 |
| Outercase (L x W x H) | 41 x 35 x 23    |

Packsize: 18 selling units per outercase

Paletization (EURO palets):

5 outercases per layer

6 layers per pallets

540 selling units per pallet.

## STOCK AND TRANSPORT CONDITIONS

Keep dry (18-22°C)

## PRODUCT SHELF LIFE

12 months under above conditions

## CERTIFICATION

This product has been produced in an IFS/BRC site

## DIETRY INFORMATION

This product is suitable for:

Halal.            yes     Not certified

Kocher.          yes     Not certified

Ingredient of animal origin: E120

Approval date: 24/05/2022