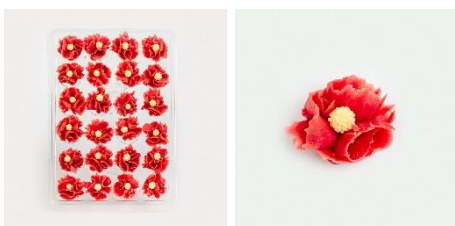


PRODUCT NAME



Chinese roses

GENERAL INFORMATION

Color	Item code	UPCA (selling unit)	EAN (outercase)	HS code
White	0001	871604200789	8716042000787	17049099
Yellow	0002	871604200796	8716042000794	17049099
Pink	0003	871604200802	8716042000800	17049099
Salmon	0004	871604200819	8716042000817	17049099
Red	0005	871604200826	8716042000824	17049099
Bordeaux	0005b	871604200833	8716042000831	17049099
Wedding	0009	871604200840	8716042000848	17049099

WEIGHT

160g.

INGREDIENTS DECLARATION

Sugar, **ALMONDS** (25%), glucose, sorbitol (E420), xanthan gum (E415), rice starch, acidifying: citric acid (E330), stabilizing: invertase, salt, colorant: see here below:

Color	Coloring agent	Also contents
White	E100	
Yellow	E161b, E100	
Pink	E120, E100	
Salmon	E120, E160a, E100	
Red	E120, E160b(ii), E100	
Bordeaux	E120, E100	Cacao
Wedding	E174	The silver pearl contains: WHEAT flour, mais starch, maltodextrin

Approval date: 24/05/2022

PRODUCT SPECIFICATONS

Versie V02

Creation date: 23/05/2022

ALLERGENS DATA

This product contains: **ALMONDS**. This product can contain trace of **NUTS, SOY, MILK**

NUTRITIONAL VALUES PER 100g

Energy	1776/425	KJ/Kcal
Fat	11.10	g
Of which saturated	1.00	g
Carbohydrates	76.30	g
Of which sugars	69.50	g
Fibers	2.40	g
Proteins	4.50	g
Salt	0.00	g

GMO STATMENT

Jan Gevers states that this product doesn't contain any GMO according to 1829/2003/EG en 1830/2003/EG Regulation

PACKAGING

cm	Dimensions
Plastic box (PET)	16.5 x 24 x 3,8
Outercase (L x W x H)	41 x 35 x 23

Packsize: 18 selling units per outercase

Paletization (EURO palets):

5 outercases per layer

6 layers per pallets

540 selling units per pallet.

STOCK AND TRANSPORT CONDITIONS

Keep dry (18-22°C)

PRODUCT SHELF LIFE

12 months under above conditions

CERTIFICATION

This product has been produced in an IFS/BRC site

DIETRY INFORMATION

This product is suitable for:

Halal. yes Not certified

Kocher. yes Not certified

Ingredient of animal origin: E120

Approval date: 24/05/2022