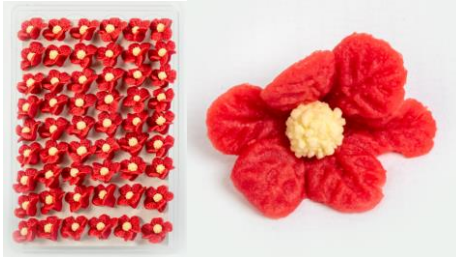


#### PRODUCT NAME



Sanyes

#### GENERAL INFORMATION

Color	Item code	UPCA (selling unit)	EAN (outercase)	HS code
White	0301	871604200963	8716042000961	17049099
Pink	0303	871604200970	8716042000978	17049099
Salmon	0304	871604200987	8716042000985	17049099
Red	0305	871604200994	8716042000992	17049099
Paars	0308	871604201014	8716042001012	17049099
Wedding	0309	871604201021	8716042001029	17049099

#### WEIGHT

150 g.

#### INGREDIENTS DECLARATION

Sugar, **ALMONDS** (25%), glucose, sorbitol (E420), xanthan gum (E415), rice starch, acidifying: citric acid (E330), stabilizing: invertase, salt, colorant: see here below:

Color	Coloring agent	Also contents
White	E100	
Pink	E120, E100	
Salmon	E120, E160a, E100	
Red	E120, E160b(ii), E100	
Paars	E120, E100	
Wedding	E174	The silver pearl contains: WHEAT flour, mais starch, maltodextrin

#### ALLERGENS DATA

This product contains: **ALMONDS**. This product can contain trace of **NUTS, SOY, MILK**

# PRODUCT SPECIFICATONS

Versie V02

Creation date: 23/05/2022

## NUTRITIONAL VALUES PER 100g

Energy	1776/425	KJ/Kcal
Fat	11.10	g
Of which saturated	1.00	g
Carbohydrates	76.30	g
Of which sugars	69.50	g
Fibers	2.40	g
Proteins	4.50	g
Salt	0.00	g

## GMO STATMENT

Jan Gevers states that this product doesn't contain any GMO according to 1829/2003/EG en 1830/2003/EG Regulation

## PACKAGING

54 units per box

cm	Dimensions
Plastic box (PET)	16.5 x 24 x 3,8
Outercase (L x W x H)	41 x 35 x 23

Packsize: 18 selling units per outercase

Paletization (EURO palets):

5 outercases per layer

6 layers per pallets

540 selling units per pallet.

## STOCK AND TRANSPORT CONDITIONS

Keep dry (18-22°C)

## PRODUCT SHELF LIFE

12 months under above conditions

## CERTIFICATION

This product has been produced in an IFS/BRC site

## DIETRY INFORMATION

This product is suitable for:

Halal.            yes     Not certified

Kocher.         yes     Not certified

Ingredient of animal origin: E120

Approval date: 24/05/2022